



Sage Estimating

Knowledgebases

Prepare estimates or budgets in minutes with industry knowledgebases.

Knowledgebases for Sage Estimating (SQL) come preconfigured with standardized cost items and assemblies using pricing from trusted industry pricing services, RSMMeans and Trade Services. Thousands of items are priced out based on regional indexes and are ready to go, eliminating the oftentimes laborious setup and data entry processes associated with implementation. Only minimal fine-tuning is required to make the knowledgebase yours! Available knowledgebases include:

- Commercial.
- Residential.
- Electrical.

Takeoff like never before.

By eliminating the tedious and time-consuming process of individual item takeoff, the knowledgebases can help you put your best bid forward faster—generating highly accurate conceptual estimates in a fraction of the time it’s currently taking you. The solution guides you step by step through the creation of estimates. Simply answer a series of questions about your project and the Knowledgebase generates precise project costs backed by extensive detail.

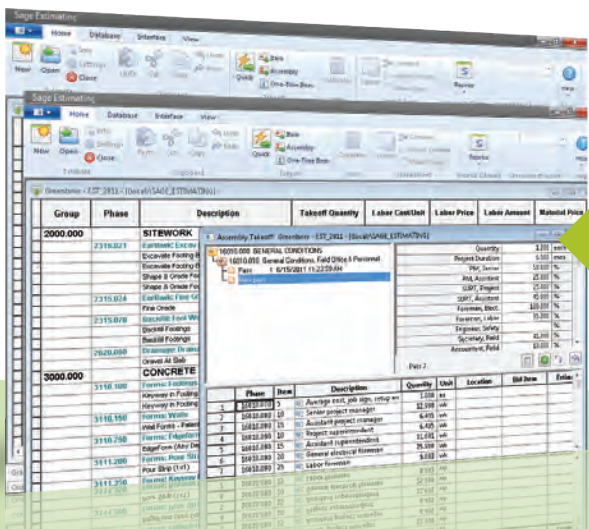
BENEFITS

Start generating estimates immediately using cost items and prebuilt assemblies.

Get up and running quickly with only a minimal amount of database customization.

Generate highly accurate conceptual estimates in a fraction of the time it’s currently taking you.

Easily create or reprice estimates based on regional pricing information from RS Means and Trade Services.



Generate highly accurate conceptual estimates in a fraction of the time it’s currently taking you.

Commercial

Commercial construction firms will hit the ground running with this complete knowledgebase populated with the latest costs for over 35,000 items from RS Means. The Commercial Knowledgebase includes a comprehensive list of Smart Assemblies and enables you to:

- Prepare capital budgets, conceptual estimates, and even detailed estimates immediately upon loading the software.
- Take off an entire system at once, for example a footing, wall, or other construction component.
- Easily work through a number of what-if scenarios—each backed by extensive pricing detail.
- Utilize a variety of pricing options such as hourly, crew, and unit price.

Residential

Designed for estimating all aspects of residential construction, this knowledgebase comes prebuilt with over 35,000 cost items. In addition, the database includes a comprehensive list of Smart Assemblies for sitework, interior finish, landscaping, and more. The Residential Knowledgebase saves time and improves accuracy by enabling you to:

- Generate conceptual and detailed budgets in a matter of minutes versus the hours or days it's currently taking you.
- Easily create or reprice estimates based on regional RS Means pricing for 700 cities.
- Take off construction systems, such as a footing, wall, or all the components of an entire home.
- Leverage the task and activities from within the Residential Knowledgebase to jumpstart project schedules.

Electrical

Designed for firms in the electrical trade, this knowledgebase includes Smart Assemblies for projects such as branch power distribution, feeders, devices, and lighting, so you can take off a complete system in a single step. The comprehensive Electrical Knowledgebase enables you to:

- Quickly take off hundreds or even thousands of items thanks to Smart Assemblies with built-in intelligence.
- Configure multiple crews using criteria for unions, prevailing wage, or interstate work.
- Easily integrate with accounting applications using Job Cost phase codes.
- Generate material lists in a meaningful format for efficient material purchasing.